

BOX SCORE: \*\*\* FINAL \*\*\*

Date: 03-17-88 Site: State Tourney, Louisville Attendance: 16,910

Team: Pleasure Ridge Park

NO.	NAME	TOTAL FG		3-POINT		FT	FTA	REB			PF	TP	A	TO	BLK	S	MIN
		FG	FGA	FG	FGA			O	D	T							
21	Lewis, Kevin	1 / 1	0 / 0	0 / 0	0	1	0	0	0	0	2	0	0	0	0	5	
33	Hammonds, Sean	6 / 7	0 / 0	0 / 0	4	4	4	4	8	2	16	1	0	1	0	32	
34	Webster, Chas	4 / 9	0 / 0	0 / 0	5	6	4	5	9	4	13	1	4	0	0	32	
12	Perick, Andy	8 / 17	0 / 1	0 / 1	0	0	1	0	1	5	16	2	7	0	2	35	
15	Woods, Mark	6 / 12	1 / 3	1 / 3	2	2	2	3	5	3	15	6	2	0	4	32	
23	Ricketts, Wayne	2 / 4	0 / 1	0 / 1	2	2	0	2	2	2	6	1	2	0	2	27	
10	Pfaadt, Shawn	0 / 0	0 / 0	0 / 0	0	0	0	0	0	1	0	0	0	0	0	3	
24	Spalding, T.	1 / 1	0 / 0	0 / 0	0	0	0	0	0	0	2	0	1	0	1	5	
TEAM																	
TOTALS		28 / 51	1 / 5	1 / 5	13	15	11	14	25	17	70	11	16	1	9	165	

Percentages: Game----- FG 28/ 51 54.9% 3-PT. 1/ 5 20.0% FT 13/ 15 86.7%

Period 1 6/ 12 50.0% 1/ 1 100.0% 3/ 4 75.0%

Period 2 12/ 16 75.0% 0/ 2 0.0% 2/ 2 100.0%

Period 3 5/ 11 45.5% 0/ 2 0.0% 2/ 2 100.0%

Period 4 5/ 12 41.7% 0/ 0 0.0% 6/ 7 85.7%

3 Deadball Rebounds

Team: Marshall County

NO.	NAME	TOTAL FG		3-POINT		FT	FTA	REB			PF	TP	A	TO	BLK	S	MIN
		FG	FGA	FG	FGA			O	D	T							
35	Stokes, Jeff	1 / 3	0 / 0	0 / 0	0	0	0	0	0	0	2	2	1	0	0	12	
42	Langhi, Donnie	3 / 5	0 / 0	0 / 0	4	5	3	2	5	3	10	0	3	0	0	32	
41	Hall, Dan	6 / 9	0 / 0	0 / 0	3	5	4	4	8	3	15	1	2	0	4	27	
10	Beth, Aaron	1 / 1	0 / 0	0 / 0	2	3	2	2	4	3	4	4	3	0	2	32	
12	Cothran, Mitch	12 / 22	5 / 8	5 / 8	5	8	1	3	4	0	34	1	6	0	1	32	
31	Cross, Michael	1 / 5	0 / 1	0 / 1	0	1	2	1	3	4	2	5	2	0	1	25	
TEAM																	
TOTALS		24 / 45	5 / 9	5 / 9	14	22	12	13	25	13	67	13	17	0	8	160	

Percentages: Game----- FG 24/ 45 53.3% 3-PT. 5/ 9 55.6% FT 14/ 22 63.6%

Period 1 4/ 11 36.4% 2/ 3 66.7% 4/ 4 100.0%

Period 2 9/ 10 90.0% 1/ 2 50.0% 1/ 3 33.3%

Period 3 6/ 14 42.9% 1/ 2 50.0% 4/ 6 66.7%

Period 4 5/ 10 50.0% 1/ 2 50.0% 5/ 9 55.6%

1 Deadball Rebounds

OFFICIALS: Ricky Chasteen, Randall Curry, Alt. -Yvon Allen SCORE BY PERIODS

Technicals: None	Pleasure Ridge Park	16	26	12	16	=	70
	Marshall County	14	20	17	16	=	67

Produced by the K.H.S.A.A. Stat Crew with FINAL III\*\*

Player	Team	Marshall County	Time	Score	Pleasure Ridge Park	Player	Team
REB: 21 A: 13 BLK: 0 TO: 15 PF: 4 S: 7 FT: 11-17 64.7% FG: 24-43 55.8%			4 2:45			REB: 22 A: 11 BLK: 1 TO: 15 PF: 9 S: 8 FT: 9-10 90.0% FG: 27-48 56.2%	
TIME - O U T Pleasure Ridge Park No. 1			4 2:23		10 ft Right Side Bank by Ricketts, Wayne, missed	2-4	50.0% 27-49 55.1%
D-3 Tot-4	D-4 Tot-22	Rebound by Hall, Dan	4 2:20			4	10
3-5 60.0%	12-19 63.1%	Hall, Dan, 1 & Bonus made 1st missed 2nd	4 2:20	*65-64	Foul on Webster, Chas		
2	8	Steal by Hall, Dan	4 2:17		Rebound by Webster, Chas	D-2 Tot-3	D-4 Tot-23
6	16	Bad Pass by Cothran, Mitch	4 1:57			7	16
D-4 Tot-5	D-5 Tot-23	Rebound by Hall, Dan	4 1:56		Dribbling Error on Penick, Andy		
3	17	Dribbling Error on Beth, Aaron	4 1:42			7-16	43.7% 27-50 54.0%
			4 1:01		10 ft Lane Jump shot by Penick, Andy, missed		
			4 1:00				
			4 0:51		Steal by Penick, Andy	1	9
			4 0:50				
			4 0:47	65-66*	Layup Off Fast Break by Penick, Andy, made	8-17	47.0% 28-51 54.9%
REB: 23 A: 13 BLK: 0 TO: 17 PF: 4 S: 8 FT: 12-19 63.1% FG: 24-43 55.8%			4 0:44			REB: 23 A: 11 BLK: 1 TO: 16 PF: 10 S: 9 FT: 9-10 90.0% FG: 28-51 54.9%	
TIME - O U T Pleasure Ridge Park No. 2			4 0:26		Foul on Penick, Andy	4	11
0-1 00.0%	12-20 60.0%	Cross, Michael, 1 & Bonus missed 1st	4 0:26				
1	5	Foul on Beth, Aaron	4 0:23		Rebound by Hammonds, Sean	D-3 Tot-4	D-5 Tot-24
			4 0:16				
REB: 23 A: 13 BLK: 0 TO: 17 PF: 5 S: 8 FT: 12-20 60.0% FG: 24-43 55.8%			4 0:17			REB: 24 A: 11 BLK: 1 TO: 16 PF: 11 S: 9 FT: 9-10 90.0% FG: 28-51 54.9%	
TIME - O U T Pleasure Ridge Park No. 3			4 0:17	65-68*	Ricketts, Wayne, 1 & Bonus made both	2-2	100% 11-12 91.5%
12-21 57.1%	24-44 54.5%	3 pt 23 ft Right Side Jump shot by Cothran, Mitch, missed	4 0:10				
0-1 Tot-1	0-3 Tot-24	Rebound by Beth, Aaron	4 0:08			5	12
			4 0:08		Foul on Penick, Andy		
			4 0:08		Sub In: Pfaadt, Shawn Out: Penick, Andy		
REB: 24 A: 13 BLK: 0 TO: 17 PF: 5 S: 8 FT: 12-20 60.0% FG: 24-44 54.5%			4 0:08			REB: 24 A: 11 BLK: 1 TO: 16 PF: 12 S: 9 FT: 11-12 91.6% FG: 28-51 54.9%	
TIME - O U T Pleasure Ridge Park No. 4			4 0:08		Sub In: Lewis, Kevin Out: Webster, Chas		
2-3 66.6%	14-22 63.6%	Beth, Aaron, 2 Free Throws made both	4 0:08	*67-68			
2	6	Foul on Beth, Aaron	4 0:07				
			4 0:07		Sub In: Webster, Chas Out: Pfaadt, Shawn		
			4 0:07		Lewis, Kevin, 1 & Bonus missed 1st	0-1 00.0%	11-13 84.6%
			4 0:06		Rebound by Woods, Mark	0-1 Tot-1	0-3 Tot-25
			4 0:06				
			4 0:06	67-70*	Woods, Mark, 1 & Bonus made both	2-2	100% 13-15 86.5%
12-22 54.5%	24-45 53.3%	22 ft Straight Away Jump shot by Cothran, Mitch, missed	4 0:02				
0-1 Tot-1	0-4 Tot-25	Rebound by Cross, Michael	4 0:02				

Player	Team	Marshall County	Time	Score	Pleasure Ridge Park	Player	Team
Seth, Aaron, Cothran, Mitch	Hall, Dan, Langhi, Donnie, Cross, Michael				Penick, Andy, Woods, Mark, Hammonds, Sean, Webster, Chas, Ricketts, Wayne		
			4 7:50		Ball to Panthers		
			4 7:47		14 ft Lane Jump shot by Woods, Mark, missed	6-12 50.0%	23-40 57.5%
			4 7:47	51-56*	Rebound by Hammonds, Sean	0-1 Tot-1	0-1 Tot-18
			4 7:28		3 ft Lane Follow by Hammonds, Sean, made	4-5 80.0%	24-41 58.5%
			4 7:28		Steal by Woods, Mark	1	8
2	14	Gripping Error on Hall, Dan	4 7:28		Traveling Violation on Webster, Chas	3	13
10-17 58.8%	20-36 55.5%	18 ft Left Base Line Jump shot by Cothran, Mitch, made	4 7:13	*53-56			
4	12	Assist by Cross, Michael	4 6:57		Traveling Violation on Webster, Chas	4	14
0-4 00.0%	20-37 54.0%	4 ft Lane Jump shot by Cross, Michael, missed	4 6:38				
0-1 Tot-1	0-1 Tot-17	Rebound by Hall, Dan	4 6:36				
6-9 66.6%	21-38 55.2%	4 ft Lane Follow by Hall, Dan, made	4 6:36	*55-56			
			4 6:21		14 ft Lane Jump shot by Penick, Andy, missed	7-14 50.0%	24-42 57.1%
0-1 Tot-2	0-1 Tot-18	Rebound by Hall, Dan	4 6:20			2	7
			4 6:20		Foul on Webster, Chas		
0-1 00.0%	9-14 64.2%	Hall, Dan, 1 & Bonus missed 1st	4 6:18			0-1 Tot-2	0-1 Tot-19
			4 5:56	55-58*	Rebound by Hammonds, Sean	5-6 83.3%	25-43 58.1%
			4 5:40		Driving Layup by Hammonds, Sean, made	5	10
			4 5:40		Assist by Woods, Mark		
2	15	10 Second Backcourt Violation on Cross, Michael	4 5:16		Driving Layup by Webster, Chas, missed	3-7 42.8%	25-44 56.8%
0-1 Tot-1	0-2 Tot-19	Rebound by Langhi, Donnie	4 5:16			3	8
4-5 60.0%	9-15 60.0%	Langhi, Donnie, 1 & Bonus missed 1st	4 5:15		Foul on Webster, Chas		
			4 5:15			0-1 Tot-1	0-2 Tot-20
			4 5:14		Rebound by Webster, Chas	4-8 50.0%	25-45 57.7%
			4 4:58	55-60*	Driving Layup by Webster, Chas, made	6	11
			4 4:58		Assist by Woods, Mark		
11-18 61.1%	22-39 56.4%	3 pt 22 ft Left Base Line Jump shot by Cothran, Mitch, made	4 4:32	*58-60			
5	13	Assist by Cross, Michael	4 4:19				
4	3	Foul on Cross, Michael	4 4:19				
		Sub In: Stokes, Jeff Out: Cross, Michael	4 4:15		8 ft Lane Jump shot by Webster, Chas, missed	4-9 44.4%	26-46 56.5%
			4 4:15		Foul on Woods, Mark	3	9
0-2 Tot-3	0-3 Tot-20	Rebound by Hall, Dan	4 4:15				
2-3 66.6%	11-17 64.7%	Hall, Dan, 1 & Bonus made both	4 4:15	*60-60			
			4 4:04		17 ft Right Angle Jump shot by Penick, Andy, missed	7-15 46.6%	26-47 55.3%
			4 4:03		Rebound by Webster, Chas	0-1 Tot-2	0-2 Tot-21
3	4	Foul on Hall, Dan	4 4:03				
1-3 33.3%	22-40 55.0%	Layup Off Fast Break by Stokes, Jeff, missed	4 4:03	60-62*	Webster, Chas, 2 Free Throws made both	5-6 83.3%	9-10 90.0%
			4 3:54				
			4 3:52		Block by Hammonds, Sean	1	1
			4 3:48		Rebound by Hammonds, Sean	0-2 Tot-3	0-3 Tot-22
			4 3:32	60-64*	18 ft Right Base Line Hook by Hammonds, Sean, made	6-7 85.7%	27-48 56.2%
		Sub In: Cross, Michael Out: Stokes, Jeff	4 3:32				
			4 3:32				
		REB: 20 A: 13 BLK: 0 TO: 15 PF: 4	4 3:32		REB: 22 A: 11 BLK: 1 TO: 14 PF: 9		
S: 6		FT: 11-17 64.7% FG: 22-40 55.0%	No. 1 Marshall County	TIME - OUT	S: 8		FT: 9-10 90.0% FG: 27-48 56.2%
11-19 57.8%	22-41 53.6%	12 ft Left Base Line Jump shot by Cothran, Mitch, missed	4 3:26				
0-1 Tot-1	0-2 Tot-21	Rebound by Cothran, Mitch	4 3:22				
12-20 60.0%	23-42 54.7%	Follow Reverse Lay Up by Cothran, Mitch, made	4 3:16	*62-64			
1	7	Steal by Hall, Dan	4 3:08				





BOX SCORE: \* OFFICIAL FIRST HALF \* Date: 03-17-88 Site: State Tourney, Louisville Attendance: 15,865

Team: Pleasure Ridge Park

NO.	NAME	TOTAL FG		3-POINT		FT	FTA	REB					PF	TP	A	TO	BLK	S	MIN
		FG	FGA	FG	FGA			O	D	T	L								
21	Lewis, Kevin	1	1	0	0	0	0	0	0	0	0	0	2	0	0	0	0	0	5
33	Hammonds, Sean	3	4	0	0	4	4	3	0	3	2	10	0	0	0	0	0	0	15
34	Webster, Chas	1	2	0	0	1	2	1	2	3	1	3	1	1	0	0	0	0	16
12	Perick, Andy	6	11	0	1	0	0	1	0	1	1	12	2	3	0	1	1	15	
15	Woods, Mark	4	7	1	2	0	0	0	2	2	1	9	2	1	0	0	3	16	
23	Ricketts, Wayne	2	2	0	0	0	0	0	0	0	0	4	0	1	0	1	1	11	
10	Pfaadt, Shawn	0	0	0	0	0	0	0	0	0	0	0	0	0	0	0	0	1	
24	Spalding, T.	1	1	0	0	0	0	0	0	0	0	2	0	1	0	1	1	5	
TEAM		18 / 28		1 / 3		5	6	5	4	9	5	42	5	7	0	6	6	85	
Percentages:		HALF-----		FG		18/ 28	64.3%	3-PT.		1/ 3	33.3%	FT		5/ 6	83.3%				
		Period 1		6/ 12		50.0%			1/ 1	100.0%			3/ 4	75.0%					
		Period 2		12/ 16		75.0%			0/ 2	0.0%			2/ 2	100.0%					

Team: Marshall County

NO.	NAME	TOTAL FG		3-POINT		FT	FTA	REB					PF	TP	A	TO	BLK	S	MIN
		FG	FGA	FG	FGA			O	D	T	L								
35	Stokes, Jeff	1	1	0	0	0	0	0	0	0	0	0	2	1	1	0	0	8	
42	Larghi, Donnie	3	4	0	0	4	4	2	0	2	2	10	0	2	0	0	0	16	
41	Hall, Dan	2	3	0	0	0	0	0	0	0	2	4	1	1	0	1	1	11	
10	Beth, Aaron	1	1	0	0	0	1	1	2	3	0	2	4	2	0	1	1	16	
12	Cothran, Mitch	6	9	3	4	1	2	0	2	2	0	16	1	5	0	1	1	16	
31	Cross, Michael	0	3	0	1	0	0	1	1	2	2	0	2	1	0	1	1	13	
TEAM		13 / 21		3 / 5		5	7	4	5	9	6	34	9	12	0	4	4	80	
Percentages:		HALF-----		FG		13/ 21	61.9%	3-PT.		3/ 5	60.0%	FT		5/ 7	71.4%				
		Period 1		4/ 11		36.4%			2/ 3	66.7%			4/ 4	100.0%					
		Period 2		9/ 10		90.0%			1/ 2	50.0%			1/ 3	33.3%					

OFFICIALS: Ricky Chasteen, Randall Curry, Alt. - Yvon Allen  
 Technicals: None  
 SCORE BY PERIODS  
 Pleasure Ridge Park 16 26 = 42  
 Marshall County 14 20 = 34

Produced by the K.H.S.A.A. Stat Crew with FINAL III™

Pleasure Ridge Park "Panthers" vs Marshall County "Marshals"  
1st Half Play by Play

PAGE : 1

Tip off at 9:00 p.m. on 03/17/88 at State Tourney, Louisville  
Produced by the K.H.S.A.A. Stat Crew with FINAL III\*

Player	Team	Marshall County	Time	Score	Pleasure Ridge Park	Player	Team
Stokes, Jeff, Langhi, Donnie		Hall, Dan, Beth, Aaron, Cothran, Mitch				Lewis, Kevin, Hammonds, Sean, Webster, Chas, Penick, Andy, Woods, Mark	
1-1	100%	1-1 100%	8 ft Left Base Line Bank by Langhi, Donnie	1 7:30	*2-0		
1		1	Assist by Stokes, Jeff	1 7:06	2-2*	1-1	100%
				1 6:42		1-1	100%
2-2	100%	2-2 100%	Langhi, Donnie, 2 Free Throws made both	1 6:42	*4-2		
1		1	Foul on Hall, Dan	1 6:33	4-4*	1-1	100%
2		2	Foul on Hall, Dan	1 5:38		2-3	66.6%
			Sub In: Cross, Michael Out: Hall, Dan	1 5:21			
				1 5:21	4-5*	1-2	50.0%
				1 5:21	4-7*	1-1	100%
				1 5:16		3-5	60.0%
				1 5:14			
			REB: 1 A: 1 BLK: 0 TD: 3 PF: 2				
			S: 1 FT: 2-2 100% FG: 1-3 33.3%	No. 1 Marshall County	TIME - OUT		
				1 4:54			
1-3	33.3%	2-6 33.3%	3 pt 21 ft Left Side Jump shot by Cothran, Mitch	1 4:08	*7-7		
1		2	Assist by Cross, Michael			1	2
2-4	50.0%	3-7 42.8%	3 pt 22 ft Left Base Line Jump shot by Cothran, Mitch	1 3:31	*10-7		
1		3	Assist by Beth, Aaron	1 2:56			
1		3	Foul on Cross, Michael	1 2:56			
				1 2:56			
				1 2:24			
				1 2:12			
1-1	100%	4-9 44.4%	Layup Off Fast Break by Stokes, Jeff	1 2:12	10-9*	2-2	100%
2		4	Assist by Beth, Aaron	1 2:05	*12-9	3-4	75.0%
				1 1:56	12-11*	1-4	25.0%
				1 1:01		4-10	40.0%
				1 1:01		1	3
				1 1:01			
4-4	100%	4-4 100%	Langhi, Donnie, 2 Free Throws made both	1 1:01	*14-11		
				1 0:40	14-13*	2-3	66.6%
				1 0:01	14-16*	2-3	66.6%
						5-11	45.4%
						6-12	50.0%

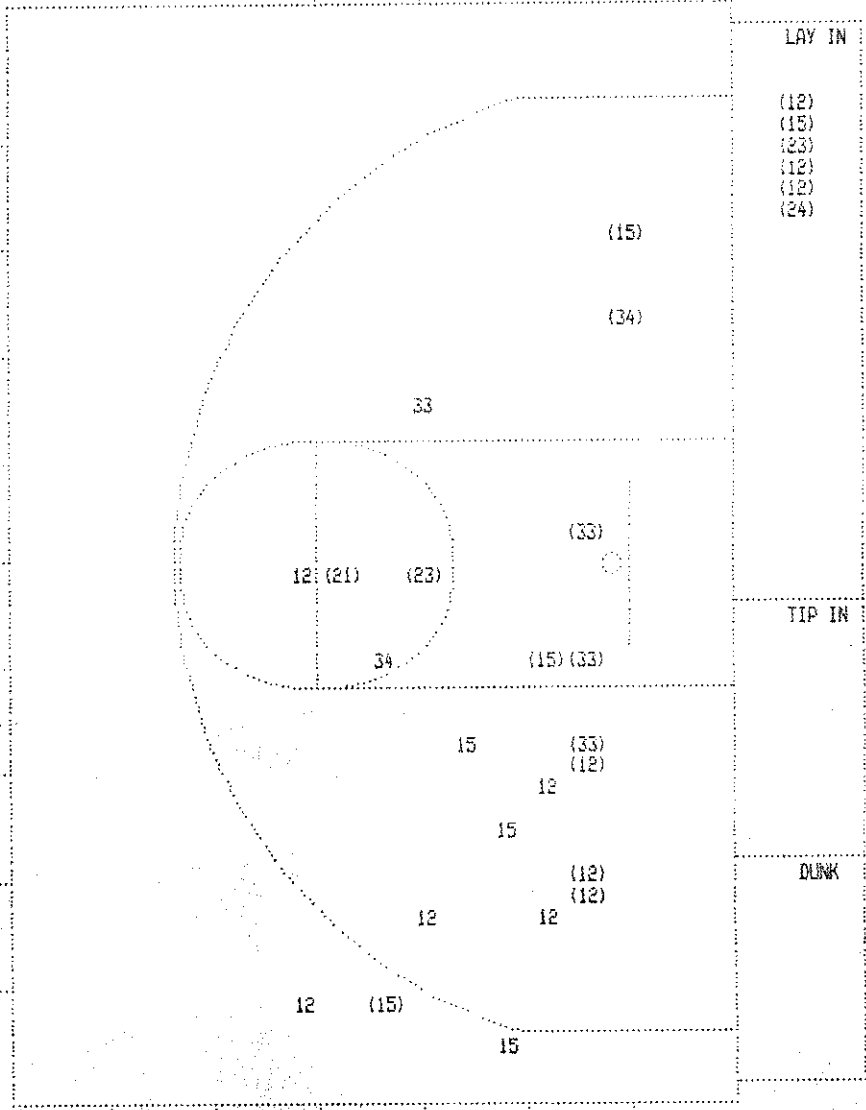
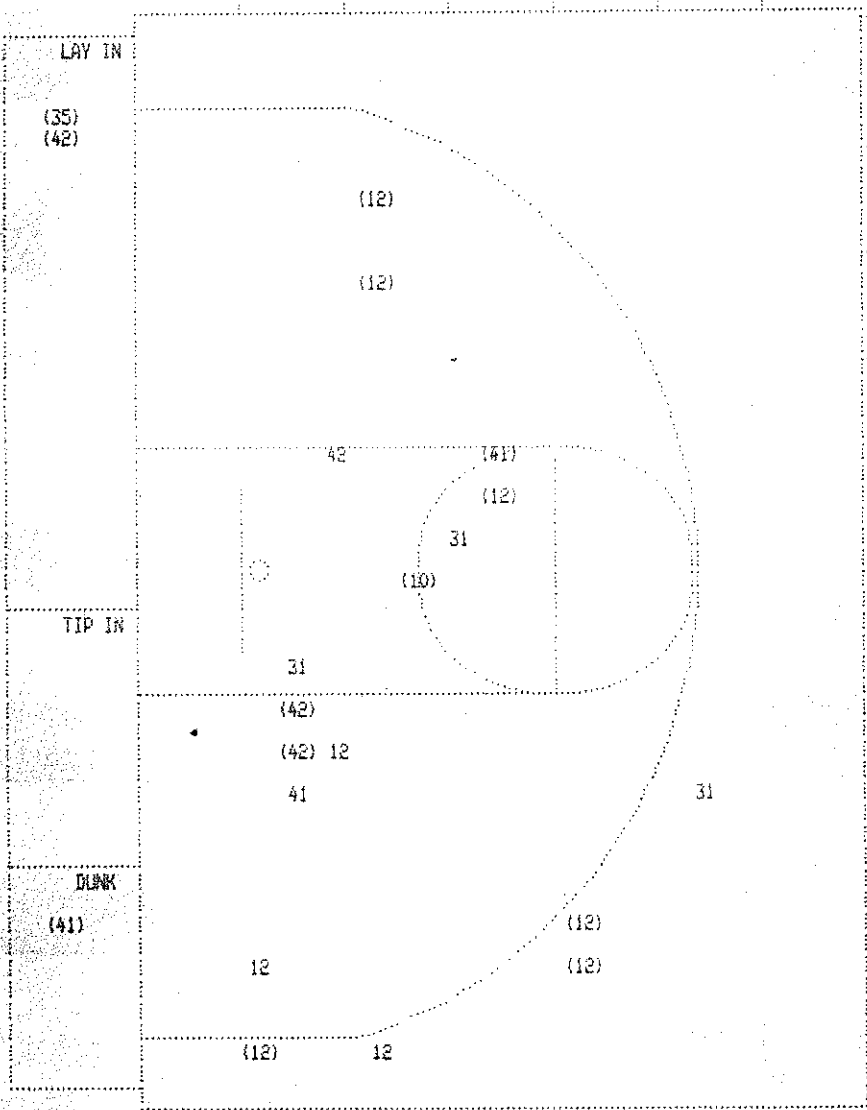
Pleasure Ridge Park "Panthers" vs Marshall County "Marshals"  
1st Half Play by Play

Tip off at 9:00 p.m. on 03/17/88 at State Tourney, Louisville  
Produced by the K.H.S.A.A. Stat Crew with FINAL III™

PAGE : 3

Player	Team	Marshall County	Time	Score	Pleasure Ridge Park	Player	Team
Beth, Aaron, Cothran, Mitch, Cross, Michael, Hall, Dan, Langhi, Donnie					Ball to Panthers		
2	6	Foul on Langhi, Donnie	2 7:50			4-4	100% 5-5 83.3%
			2 7:50	141-72*	Hammonds, Sean, 1 & Bonus made both	3-4	75.0% 7-15 46.6%
			2 7:35	141-74*	4 ft Lane Follow by Hammonds, Sean	3-5	60.0% 8-16 50.0%
			2 7:07	141-76*	Layup Off Fast Break by Woods, Mark Assist by Webster, Chas	1	1
		REB: 8 A: 4 BLK: 0 TO: 7 PF: 6 S: 1 FT: 4-4 100% FG: 4-11 36.3%	2 7:07		REB: 5 A: 1 BLK: 0 TO: 2 PF: 3 S: 3 FT: 5-6 83.3% FG: 8-16 50.0%		
		No. 2 Marshall County	T I M E - O U T				
			2 6:49	14-24*	16 ft Left Base Line Jump shot by Woods, Mark Assist by Penick, Andy	4-5	66.6% 9-17 52.9%
			2 6:36	*16-24		1	2
3-6	50.0%	5-12 41.6%	2 6:36	*16-24			
2	5	11 ft Lane Jump shot by Cothran, Mitch Assist by Cross, Michael	2 5:30	16-26*	14 ft Right Base Line Jump shot by Penick, Andy Assist by Woods, Mark	2-5	33.3% 10-18 55.5%
			2 5:15	16-28*	8 ft Right Base Line Turnaround by Penick, Andy	3-7	42.8% 11-19 57.8%
1-2	50.0%	6-13 46.1%	2 6:03	*18-28			
3	6	Dunk Off Fast Break by Hall, Dan Assist by Beth, Aaron	2 5:55	18-30*	Layup Off Fast Break by Ricketts, Wayne Assist by Penick, Andy	1-1	100% 12-20 60.0%
			2 5:43	*20-30		2	4
1-1	100%	7-14 50.0%	2 5:09		Foul on Hammonds, Sean	2	4
1-1	100%	5-5 100%	2 5:09	*21-30			
			2 5:09		Sub In: Spalding, T. Out: Hammonds, Sean		
1-2	50.0%	5-6 83.3%	2 5:08				
			2 4:54		Foul on Penick, Andy	1	5
0-1	00.0%	5-7 71.4%	2 4:54				
4-7	57.1%	8-15 53.3%	2 4:23	*23-30			
			2 4:16	23-32*	Layup Off Fast Break by Penick, Andy	4-9	44.4% 13-22 59.0%
			2 3:44	23-34*	Layup Off Fast Break by Penick, Andy	5-10	50.0% 14-23 60.8%
2-3	66.6%	9-16 56.2%	2 3:19	*25-34			
1	7	6 ft Left Base Line Bank by Langhi, Donnie Assist by Hall, Dan	2 2:30	*27-34			
5-8	62.5%	10-17 58.8%	2 2:16	27-36*	8 ft Lane Turnaround by Ricketts, Wayne Assist by Woods, Mark	2-2	100% 15-24 62.5%
						2	5
2-3	66.6%	11-18 61.1%	2 1:58	*29-36			
			2 1:44	29-38*	12 ft Left Base Line Follow by Webster, Chas	1-2	50.0% 15-26 61.5%
6-9	66.6%	12-19 63.1%	2 1:25	*32-38			
4	8	3 pt 23 ft Left Side Jump shot by Cothran, Mitch Assist by Beth, Aaron	2 1:12	32-40*	14 ft Right Base Line Jump shot by Penick, Andy	6-11	54.5% 17-27 62.9%
3-4	75.0%	13-20 65.0%	2 0:55	*34-40			
1	9	Driving Layup by Langhi, Donnie Assist by Cothran, Mitch	2 0:29	34-42*	Layup Off Fast Break by Spalding, T.	1-1	100% 18-28 64.2%





Marshall County				
Player		Player		Player
35 - Stokes, Je	1 / 1 100.0%	31 - Cross, Mic	0 / 3 0.0%	
42 - Langhi, Do	3 / 4 75.0%			
41 - Hall, Dan	2 / 3 66.6%			
10 - Beth, Aaro	1 / 1 100.0%			
12 - Cothran, M	6 / 9 66.6%			
Layups	1-9 Ft	10-15 Ft	Over 15 Ft	3 Pointers Total
3 / 3	3 / 7	3 / 4	1 / 2	3 / 5 13 / 21
100.0%	42.9%	75.0%	50.0%	60.0% 61.9%

Pleasure Ridge Park					
Player		Player		Player	
21 - Lewis, Kev	1 / 1 100.0%	23 - Ricketts,	2 / 2 100.0%		
33 - Hammonds,	3 / 4 75.0%	24 - Spalding,	1 / 1 100.0%		
34 - Webster, C	1 / 2 50.0%				
12 - Penick, An	6 / 11 54.5%				
15 - Woods, Mar	4 / 7 57.1%				
Layups	1-9 Ft	10-15 Ft	Over 15 Ft	3 Pointers Total	
6 / 6	6 / 6	4 / 10	1 / 3	1 / 3 18 / 28	
100.0%	100.0%	40.0%	33.3%	33.3% 64.3%	